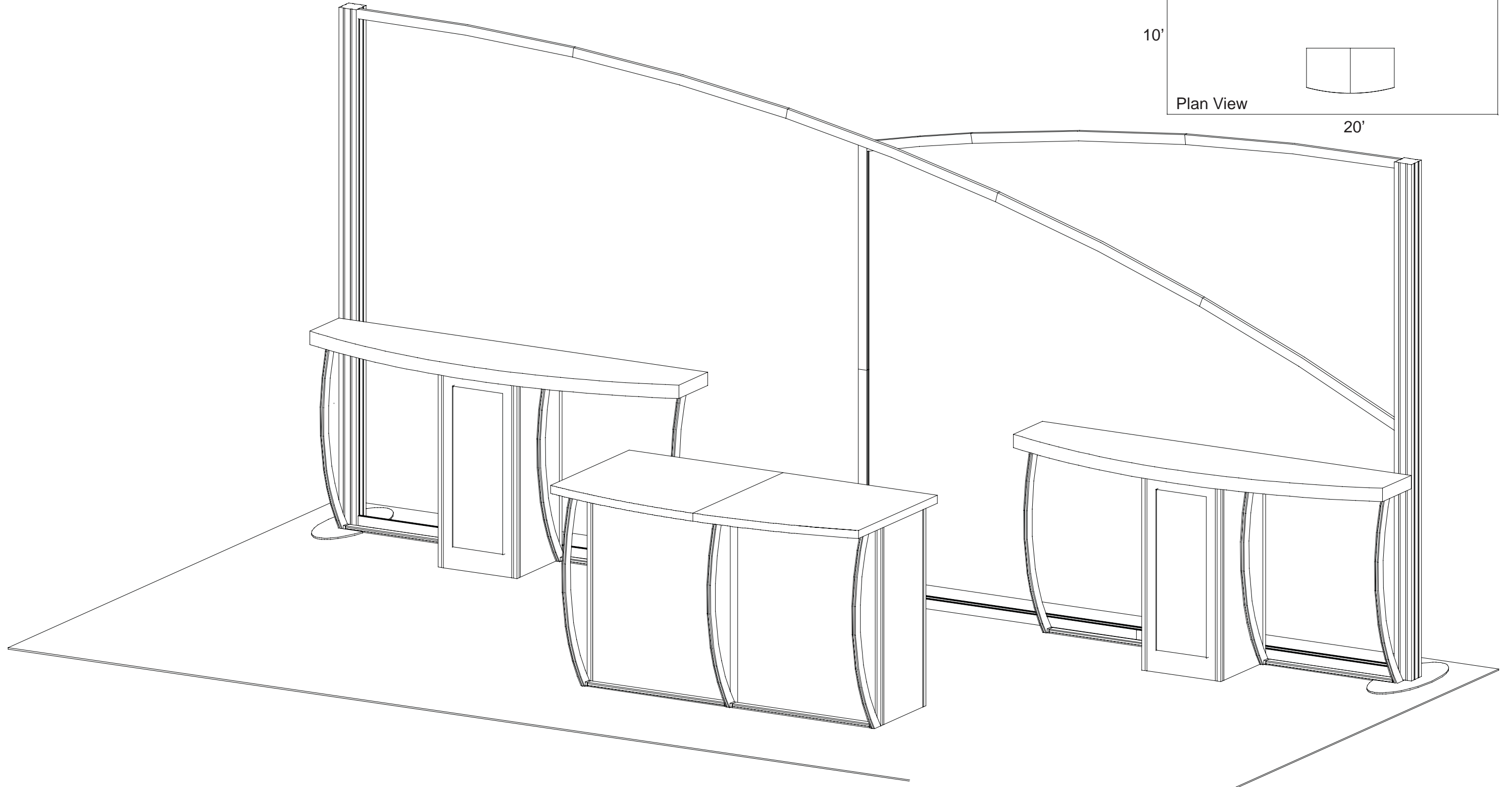


visionary[™]
DESIGNS



WHEN DISASSEMBLING ALUMINUM EXTRUSION, TIGHTEN ALL SETSCREWS AND LOCKS TO PREVENT LOSS DURING SHIPPING

visionary™ IDESIGNS

Using Your Setup Instructions

The Visionary Designs Setup Instructions are created specifically for your configuration. They are laid out sequentially, including an exploded view of the entire display, and then a logical series of detailed steps to assemble the main structure and components. We encourage you to study the instructions **before** attempting to assemble your exhibit.

Each page reminds you to tighten the setscrews after disassembling your exhibit to prevent loss of the locks and setscrews (see below in RED). This is **VERY IMPORTANT**.

Cleaning and Packing Your Display

- 1) Use care when cleaning aluminum extrusion or acrylic inserts. Use only non-abrasive cleaners.
- 2) When cleaning laminate inserts or countertops, use mild cleansers and a soft material such as cotton.
- 3) Keep all display components away from extreme heat and long exposure to sunlight to avoid warping and fading.
- 4) Retain all packing material. It will make re-packing much easier and will reduce the likelihood of shipping damage.



The Tool

Most Visionary Designs exhibits can be assembled with the supplied Hex Key Tool. Occasionally, a flat head screwdriver may be required.

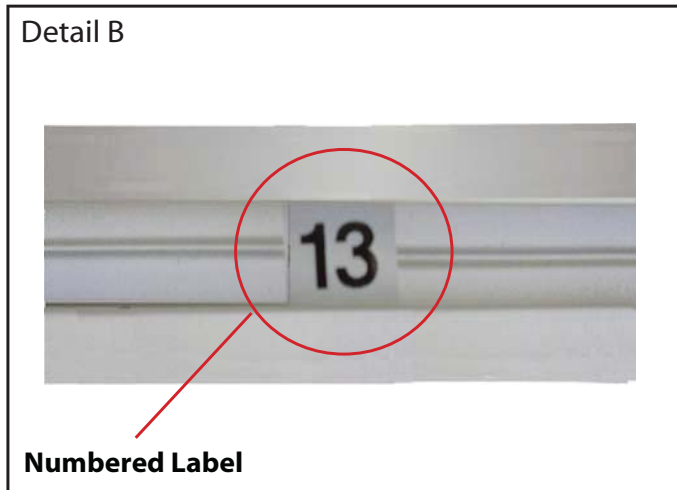


Typical Connection

Most horizontal extrusion connections have a patented expandable lock. This lock inserts into the groove of an opposing extrusion. Tightening the lock with the Hex Key Tool expands the lock and creates a strong positive connection.



Typical Connection (cont'd)



Detail B

Numbered Label

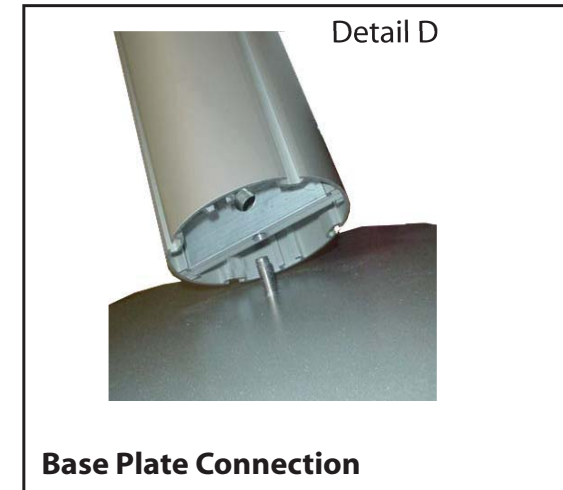
Each extrusion contains a numbered label which corresponds with setup instructions. The label is located within a groove of the extrusion (when possible). With Visionary Designs the labels contain Black numbers unless otherwise specified.



Detail C

Horizontal Inline Connection (remove only one setscrew)

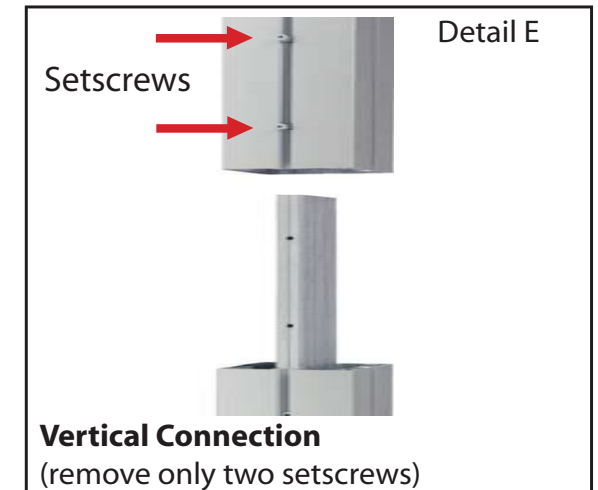
Remove only (1) setscrew when disassembling. Replace setscrew in extrusion after assembling it. Before packing, replace setscrew in extrusion to avoid losing it.



Detail D

Base Plate Connection

Attach base plate to round or square vertical extrusion using the bolt provided. Be careful not to strip the threads.



Detail E

Vertical Connection
(remove only two setscrews)

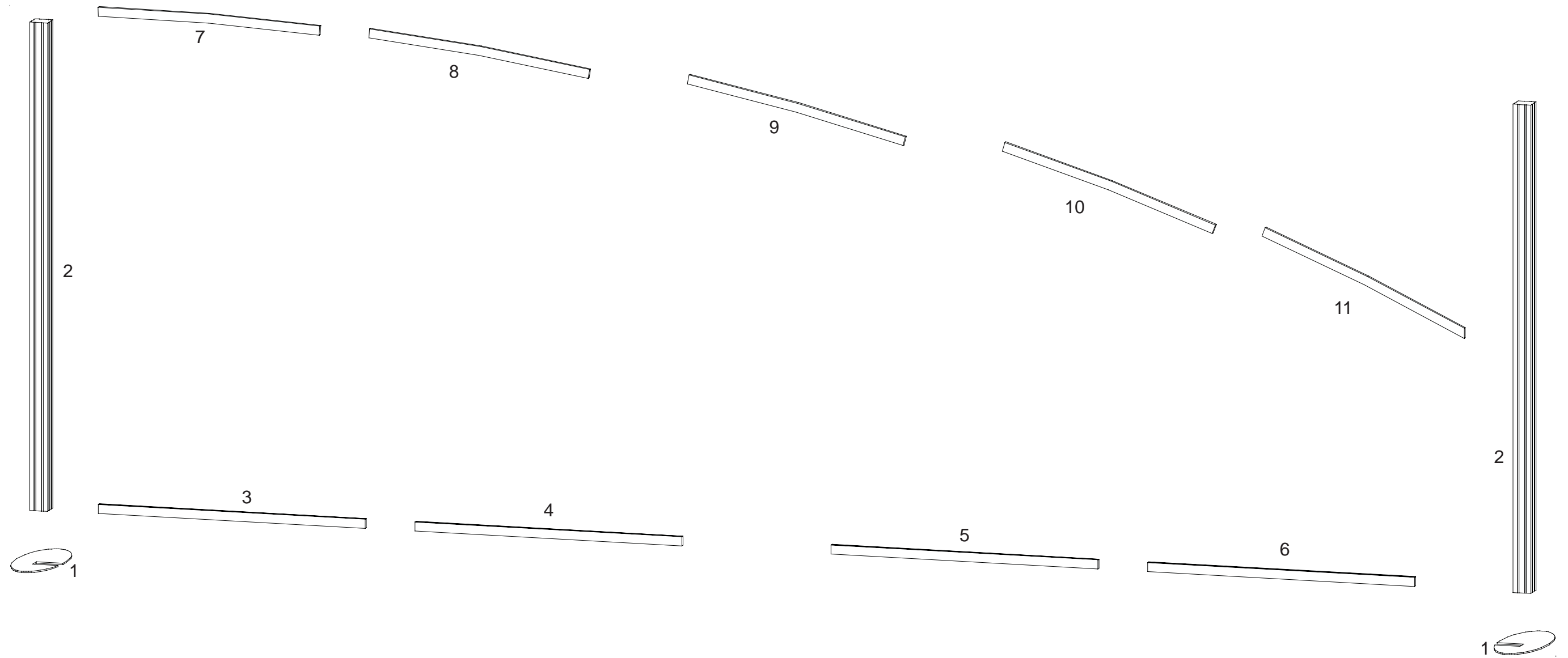
When vertical extrusions are packed in portable cases rather than crates or tubs, they must be broken down into smaller sections which then require assembly.

Remove only (2) setscrews when disassembling. Replace setscrews in extrusion after assembling it. Before packing, replace setscrews in extrusion to avoid losing them.

WHEN DISASSEMBLING ALUMINUM EXTRUSION, TIGHTEN ALL SETSCREWS AND LOCKS TO PREVENT LOSS DURING SHIPPING

Item	Quantity	Description
1	2	Base Plates
2	2	96" Square Extrusion
3	1	53.7087" Lower Horizontal Extrusion
4	1	53.7087" Lower Horizontal Extrusion
5	1	53.7087" Lower Horizontal Extrusion
6	1	53.7087" Lower Horizontal Extrusion
7	1	44.6" Upper Formed Extrusion
8	1	44.6" Upper Formed Extrusion
9	1	44.6" Upper Formed Extrusion
10	1	44.6" Upper Formed Extrusion
11	1	44.6" Tapered Upper Formed Extrusion

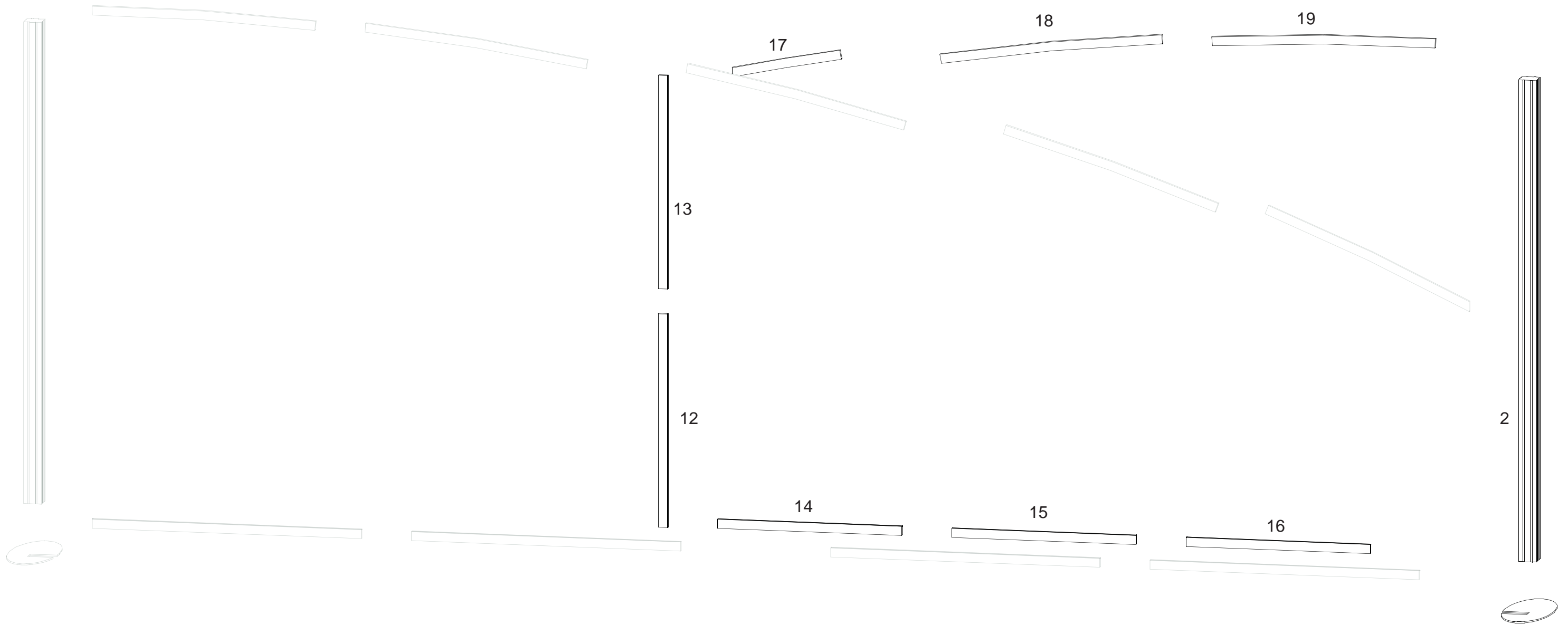
- Steps:
- 1) Attach 96" square extrusion #2 to base plates #1.
 - 2) Connect lower extrusion #'s 3, 4, 5, and 6 together then connect to square extrusions #2 as shown in illustration.
 - 3) Connect upper formed extrusion #'s 7, 8, 9, 10, and 11 together then connect to square extrusions #2 as shown in illustration.



WHEN DISASSEMBLING ALUMINUM EXTRUSION, TIGHTEN ALL SETSCREWS AND LOCKS TO PREVENT LOSS DURING SHIPPING

Item	Quantity	Description
12	1	42.52"h Vertical Extrusion
13	1	42.52"h Vertical Extrusion
14	1	36.7819"w Lower Horizontal Extrusion
15	1	36.7819"w Lower Horizontal Extrusion
16	1	36.7819"w Lower Horizontal Extrusion
17	1	22.23"w Tapered Upper Formed Extrusion
18	1	44.6"w Upper Formed Extrusion
19	1	44.6"w Upper Formed Extrusion

- Steps:
- 1) Attach 42.52"h horizontal extrusion #'s 12 and 13 together.
 - 2) Connect lower extrusion #'s 14, 15, and 16 together then connect to square extrusion #2 and vertical extrusion #12/13 as shown in illustration.
 - 3) Connect upper formed extrusion #'s 17, 18, and 19 together then connect to square extrusion #2 and vertical extrusion #12/13 as shown in illustration.



WHEN DISASSEMBLING ALUMINUM EXTRUSION, TIGHTEN ALL SETSCREWS AND LOCKS TO PREVENT LOSS DURING SHIPPING

866.652.2100

- Item Description
- 1 38" h End Cap
- 2 14.125" w x 38" h Flat Panel
- 3 38" h 90° Corner Connector
- 4 14.125" w x 38" h Flat Panel w/Door
- 5 38" h 90° Corner Connector
- 6 14.125" w x 38" h Flat Panel
- 7 38" h End Cap

Assemble Parts in numerical Order.

- 20 38" h Formed Extrusion
- 21 27" w Horizontal Extrusion
- 22 38" h Formed Extrusion
- 23 27" w Horizontal Extrusion
- 24 38" h Formed Extrusion
- 25 27" w Horizontal Extrusion
- 26 38" h Formed Extrusion
- 27 27" w Horizontal Extrusion

1 □

□ 7

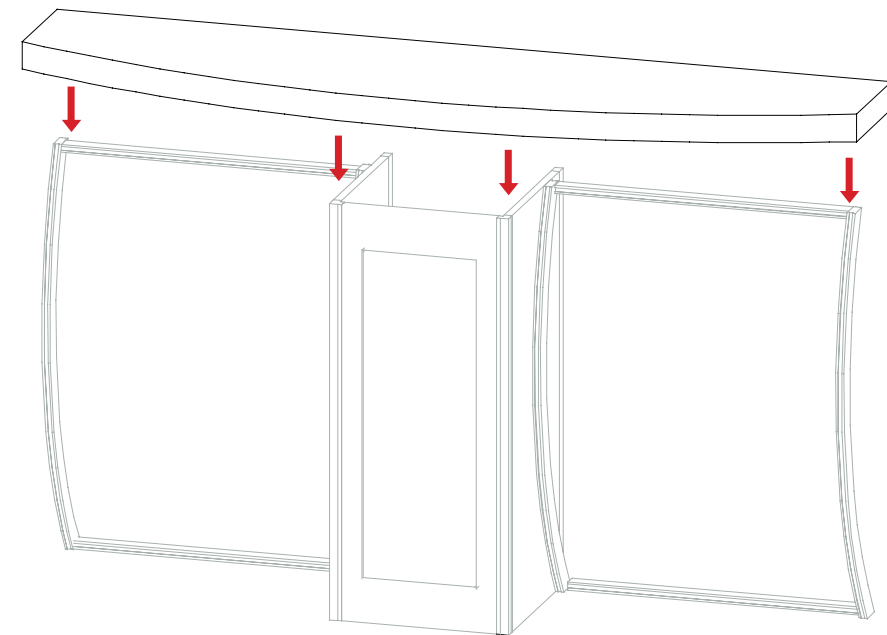
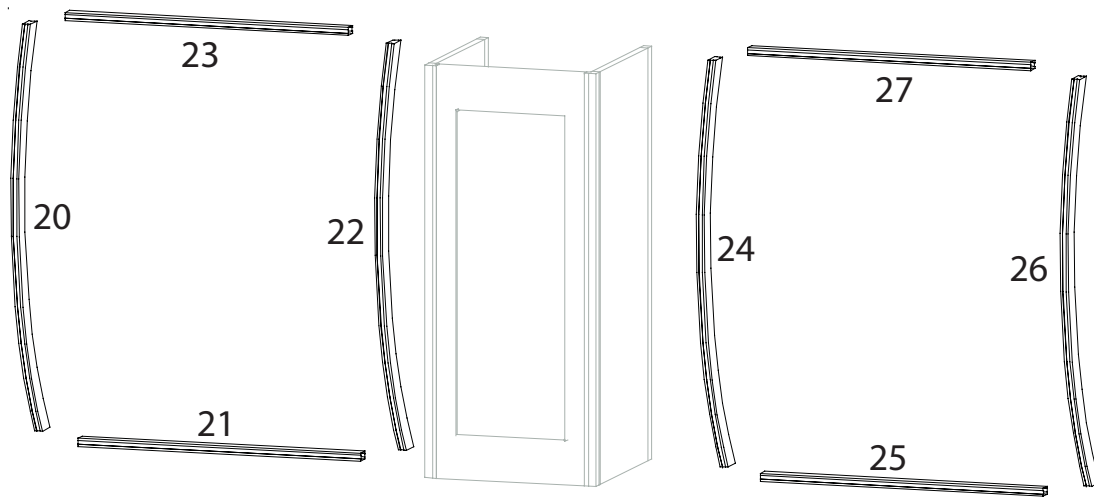
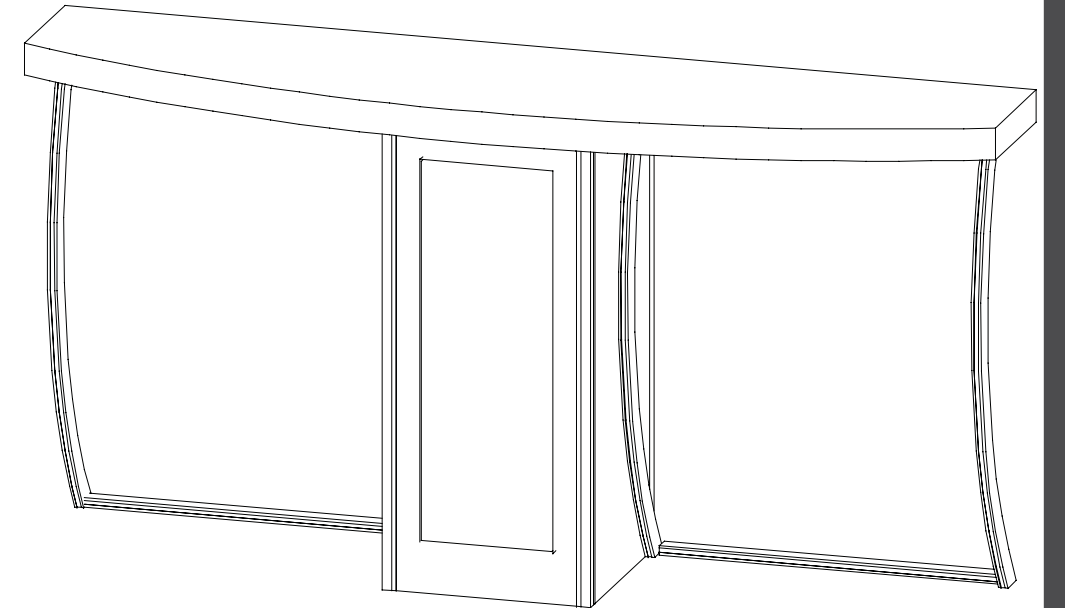
2

6

3 □

4

□ 5



WHEN DISASSEMBLING ALUMINUM EXTRUSION, TIGHTEN ALL SETSCREWS AND LOCKS TO PREVENT LOSS DURING SHIPPING

866.652.2100

- Item Description
- 8 38" h End Cap
- 9 14.125" w x 38" h Flat Panel
- 10 38" h 90° Corner Connector
- 11 14.125" w x 38" h Flat Panel w/Door
- 12 38" h 90° Corner Connector
- 13 14.125" w x 38" h Flat Panel
- 14 38" h End Cap

Assemble Parts in numerical Order.

- 28 38" h Formed Extrusion
- 29 27" w Horizontal Extrusion
- 30 38" h Formed Extrusion
- 31 27" w Horizontal Extrusion
- 32 38" h Formed Extrusion
- 33 27" w Horizontal Extrusion
- 34 38" h Formed Extrusion
- 35 27" w Horizontal Extrusion

8 □

□ 14

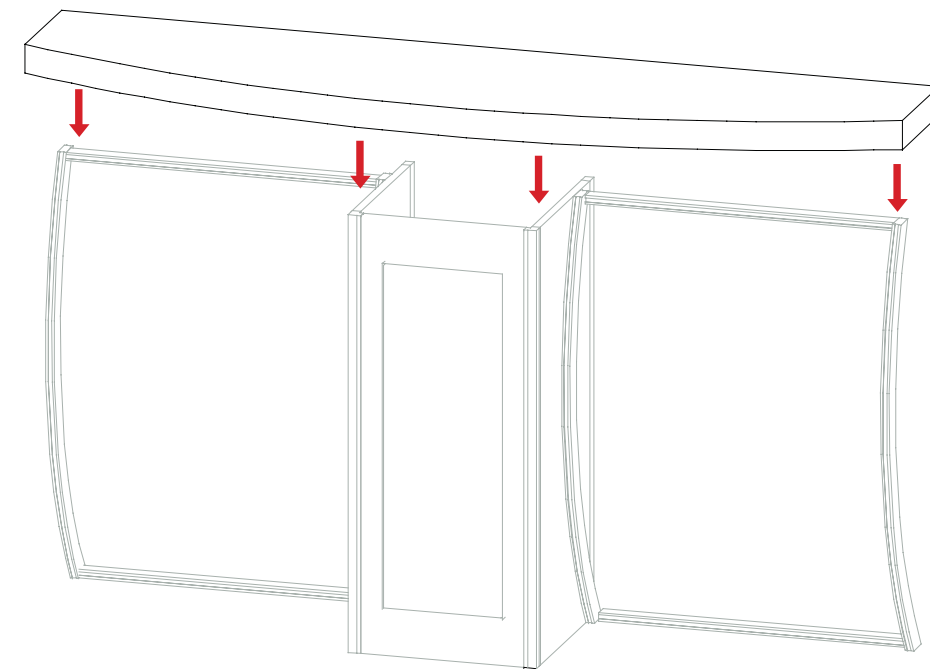
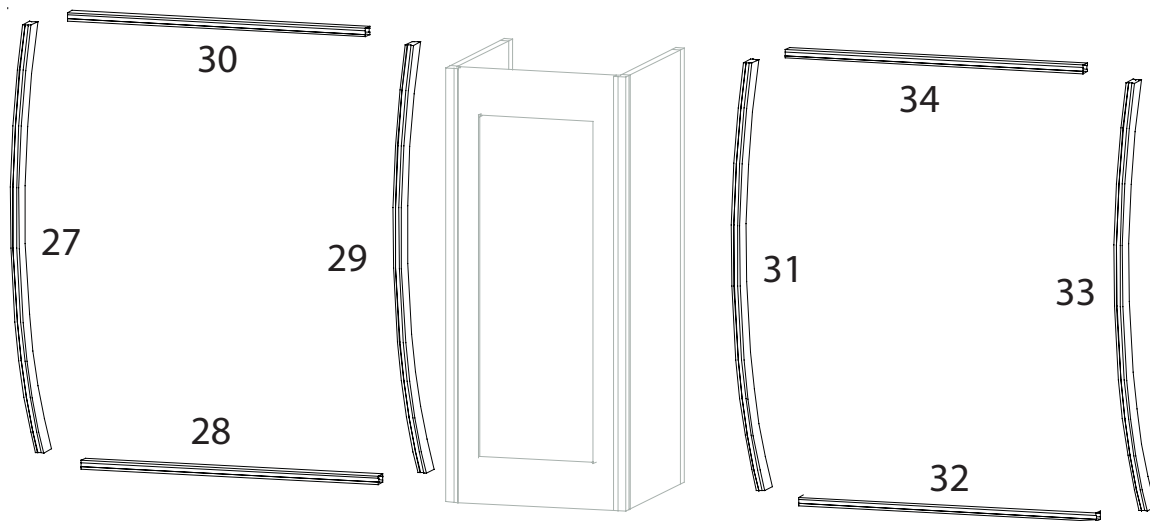
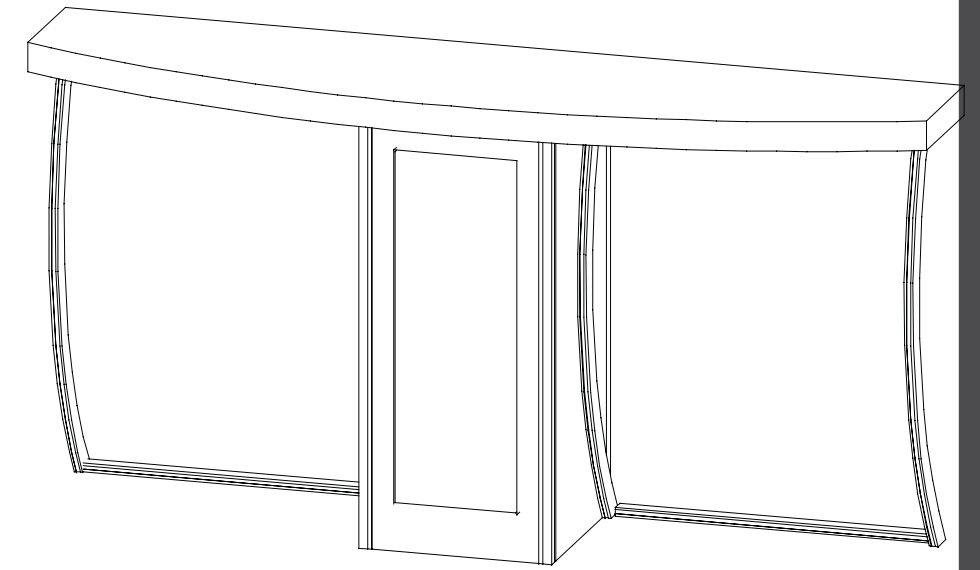
9

13

10 □

11

□ 12



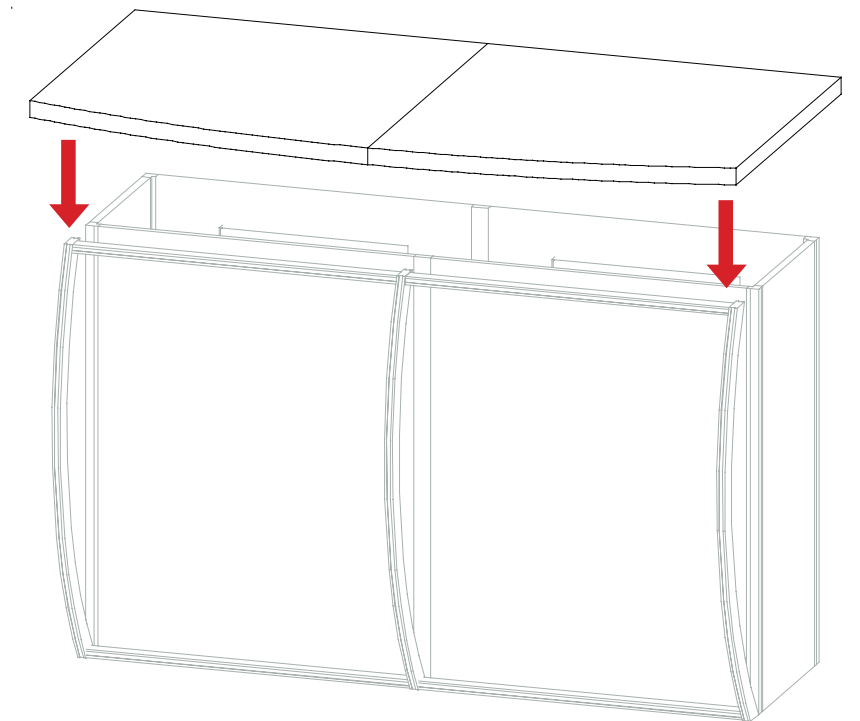
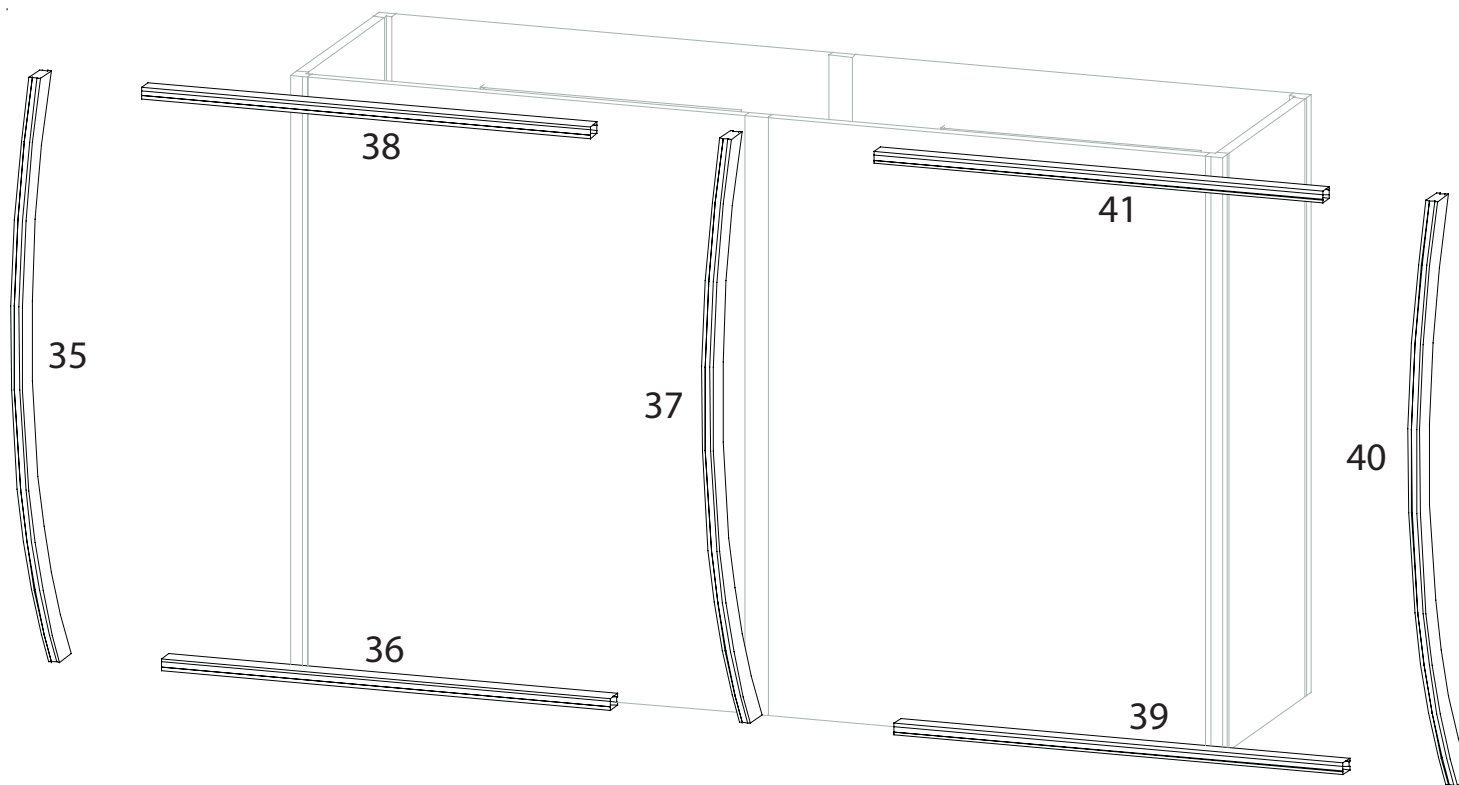
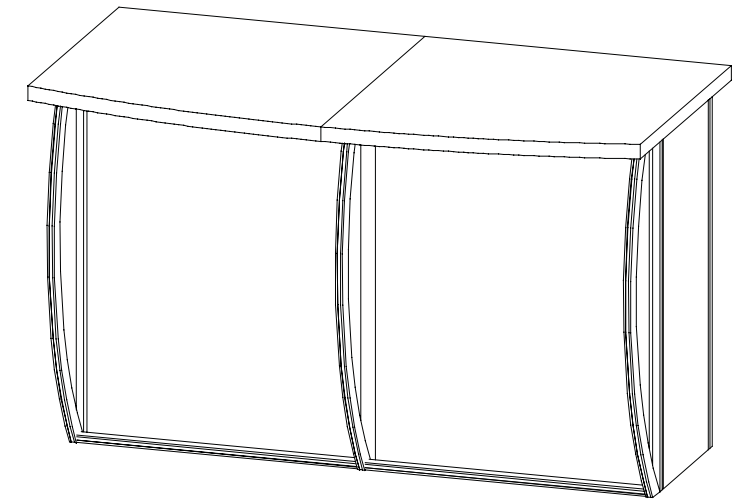
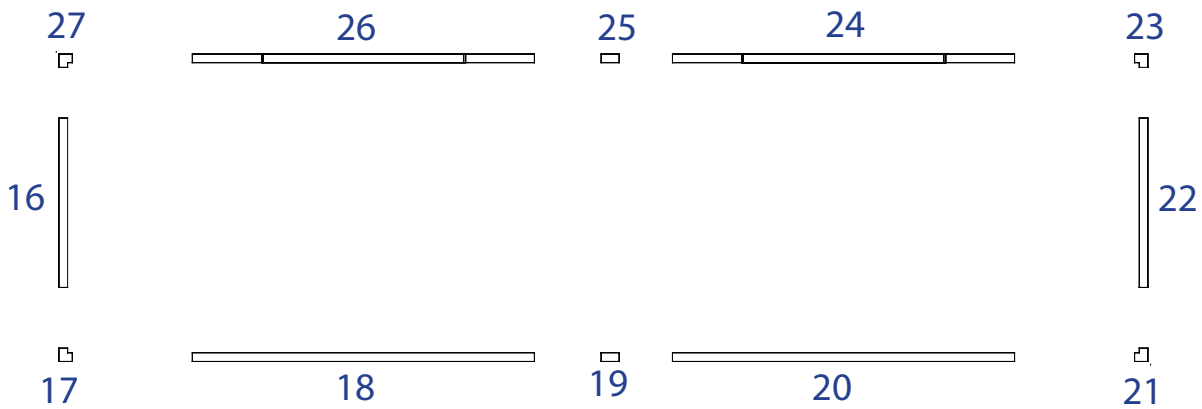
WHEN DISASSEMBLING ALUMINUM EXTRUSION, TIGHTEN ALL SETSCREWS AND LOCKS TO PREVENT LOSS DURING SHIPPING

866.652.2100

- Item Description
- 1 38" h End Cap
- 2 14.125" w x 38" h Flat Panel
- 3 38" h 90° Corner Connector
- 4 14.125" w x 38" h Flat Panel w/Door
- 5 38" h 90° Corner Connector
- 6 14.125" w x 38" h Flat Panel
- 7 38" h End Cap

Assemble Parts in numerical Order.

- 20 38" h Formed Extrusion
- 21 27" w Horizontal Extrusion
- 22 38" h Formed Extrusion
- 23 27" w Horizontal Extrusion
- 24 38" h Formed Extrusion
- 25 27" w Horizontal Extrusion
- 26 38" h Formed Extrusion
- 27 27" w Horizontal Extrusion



WHEN DISASSEMBLING ALUMINUM EXTRUSION, TIGHTEN ALL SETSCREWS AND LOCKS TO PREVENT LOSS DURING SHIPPING